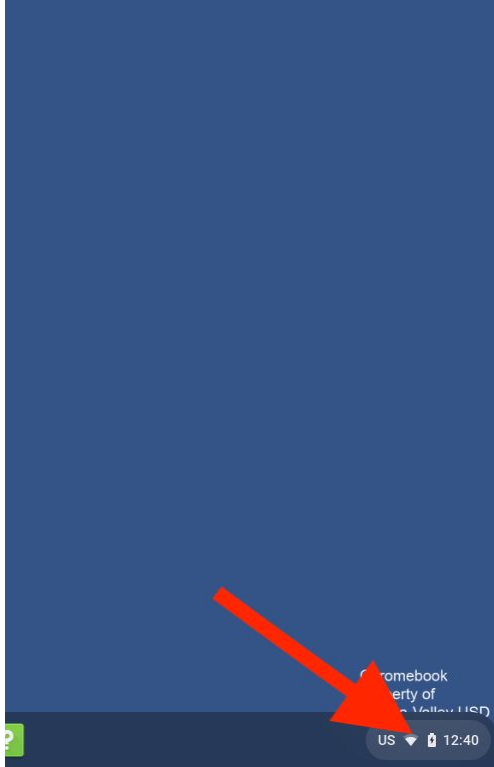


# How to Login to Your C-VUSD Student Device

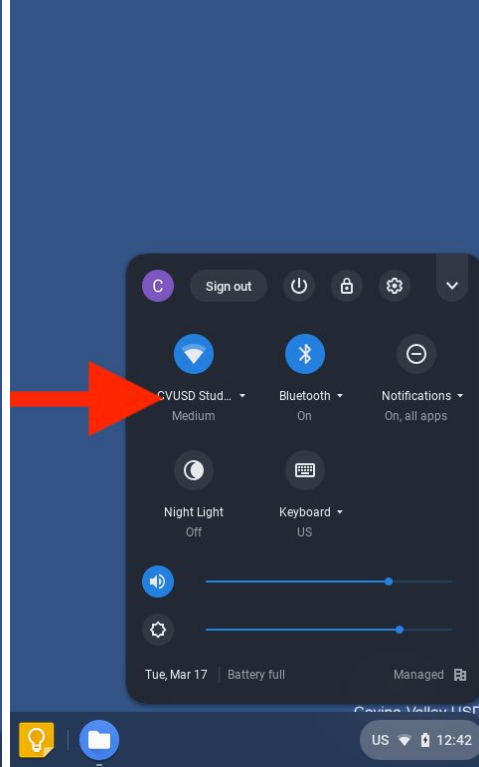
Connect the Device to Your Home Wifi Using Your Home Credentials

## Chromebook

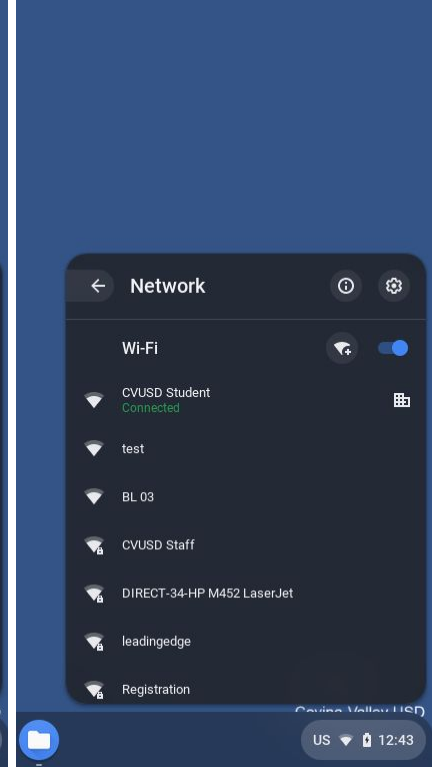
1



2

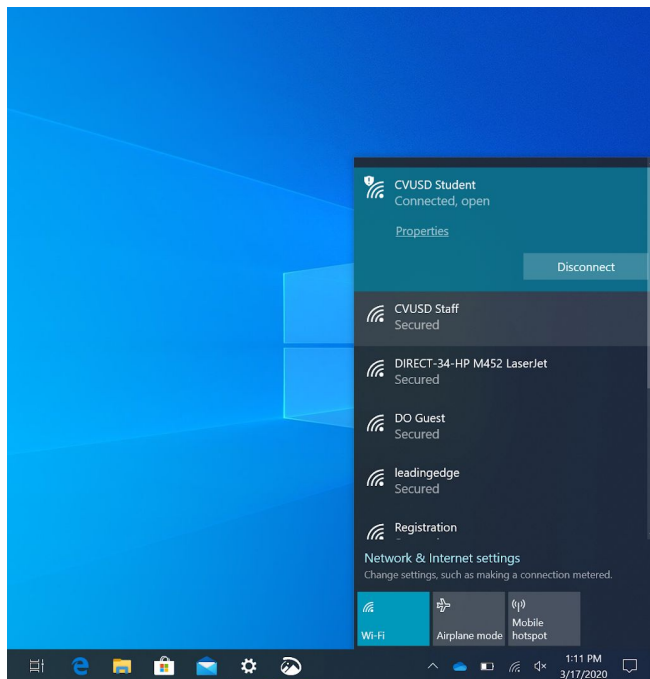


3

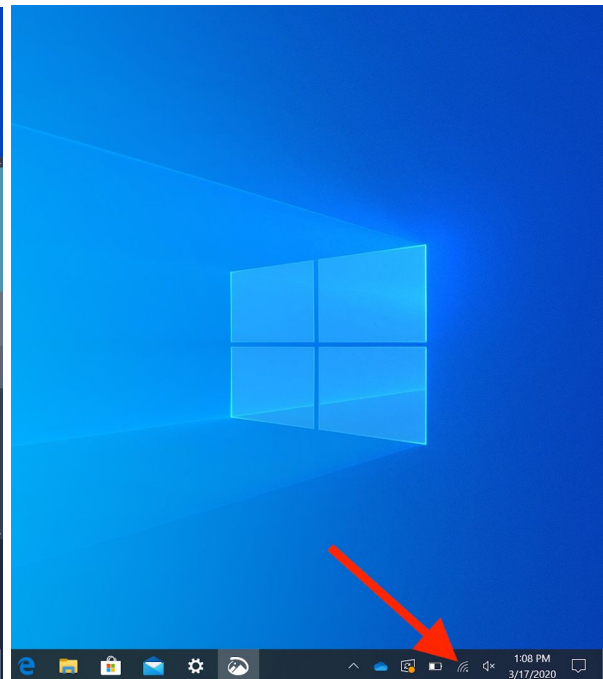


## Windows 10

1

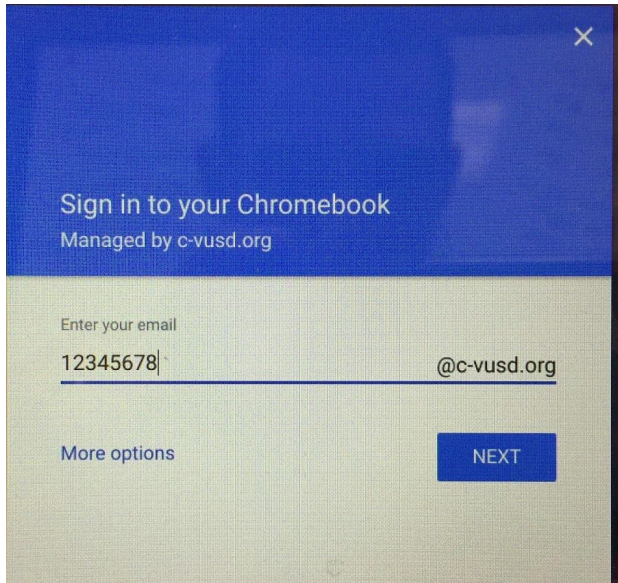


2



# Log-in to the Device Using Your C-VUSD Account

## Chromebook



## Elementary Grades K-3

Username: Student ID # @c-vusd.org  
Password: c-v plus the last 5 digits of their student ID #

Example: Student with ID # 12345678

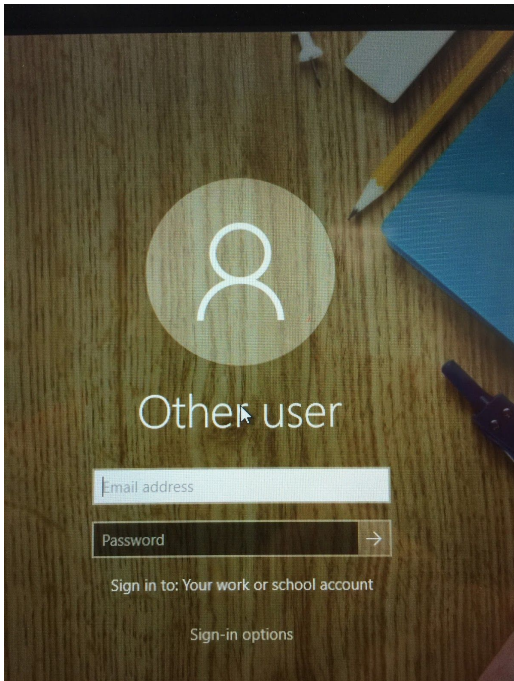
Username: 12345678@c-vusd.org  
Password: c-v45678

## High School Students Grades 9-12

Example: A student with ID # 12345678

Username: 12345678@c-vusd.org  
Password: student-created password

## Windows 10 PC



## Elementary Grades 4-5

Username: Student ID # @c-vusd.org  
Password: c-v last 5 digits of their student ID #

Username: 12345678@c-vusd.org  
Password: c-v45678

## Middle School Students Grades 6-8

Example: A student with ID # 12345678

Username: 12345678@c-vusd.org  
Password: student-created password